

Installation Instructions for Spectrasonics Stylus RMX

These instructions will take you through the process to install a store bought, “boxed” version of Spectrasonics Stylus RMX onto your Receptor hardware plug-in player.

NOTE: You must have Version 1.2.X or later system software installed on your Receptor in order to install Stylus RMX! To check your software version, press the SETUP button on the Front Panel Receptor, and then turn the bottom display knob until you see “SU System Version”. Verify that the system software is version 1.2.x or later before proceeding. If you do not have version 1.2 or later software, visit www.museresearch.com to download the latest update and install it before proceeding.

After updating Receptor to the latest software, you will need connect Receptor to a VGA monitor, mouse, and keyboard, **or** use *Receptor Remote* to access Receptor from your computer to register the plug-in before use. *Please review the Receptor Users Guide for more information.*

Steps to install Stylus RMX:

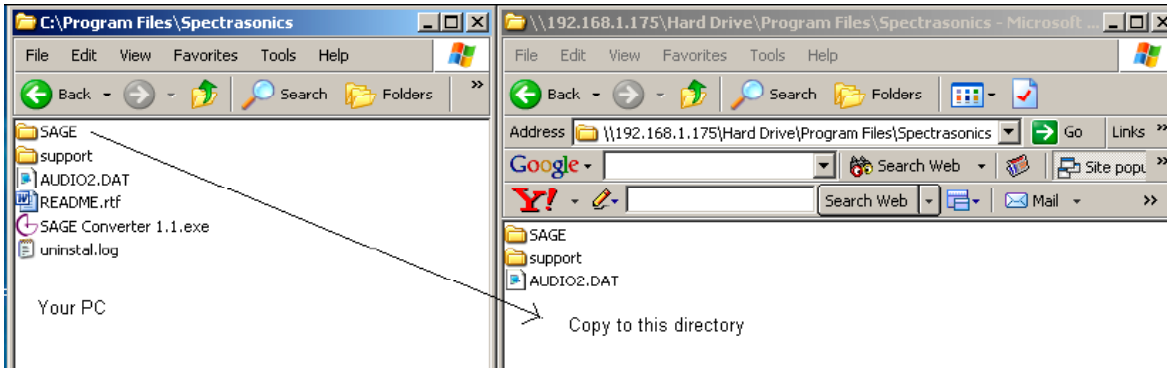
1. Follow the manufacturer instructions to install Stylus RMX on your personal computer.
2. Download the Receptor RMX prep file (“stylusrmx-prep-1.0-2.mrpk”) onto your computer. You can download this from www.plugorama.com
3. Establish a network connection between your Receptor and your computer via Ethernet. Open up Receptor’s hard drive on your desktop. Please see your user’s manual on how to do this if you aren’t familiar on how to establish such a connection.
4. Copy “stylusrmx-prep-1.0-2.mrpk ” to the Receptor Hard drive folder “<Receptor HD>\Drop Installers Here” and then click the “INSTALL 1 FILE” button in the SETUP page on Receptor. Verify that the installation was successful by checking the confirmation under the “last installation results” message area under the INSTALL button.
5. From your personal computer, locate the file called “**stylusRMX.dll**” and copy this file to the mounted Receptor hard drive folder shown below:

<ReceptorHD>\Program Files\VST Plugins\Unsupported Plugins\Spectrasonics\Stylus RMX

6. From your personal computer, copy the **SAGE** folder from the Program Files folder of your PC to the Receptor Hard Drive mounted on your computer.

In other words: <Your PC> C:\Program Files\Spectrasonics\SAGE

Must be copied over to: <Receptor HD>\Program Files\Spectrasonics



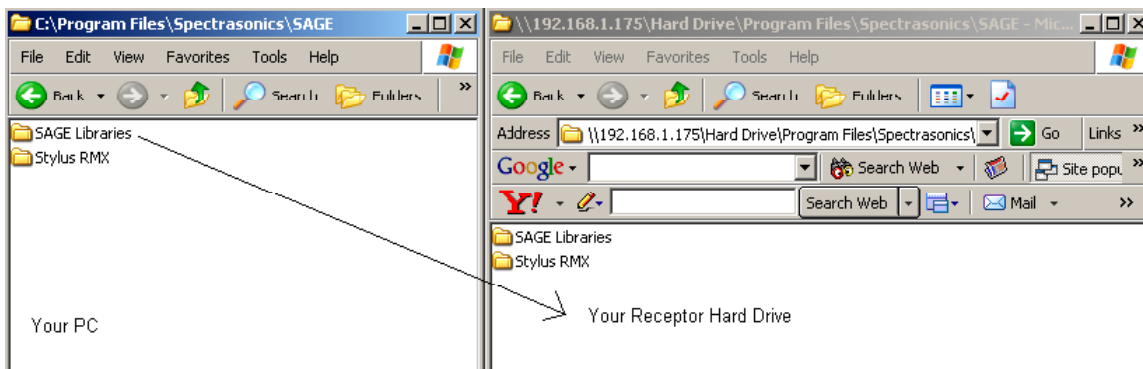
7. Once the SAGE folder has been copied over, open to the Receptor SETUP window and press INSTALL.
8. You will now be able to launch Stylus RMX and run the registration program. Instantiate the plug-in, and then open the Edit View and Register the plug-in.

NOTE: You can copy text from a Macintosh window and paste to a Receptor window by selecting Edit > Paste from the Receptor Remote Control menu.

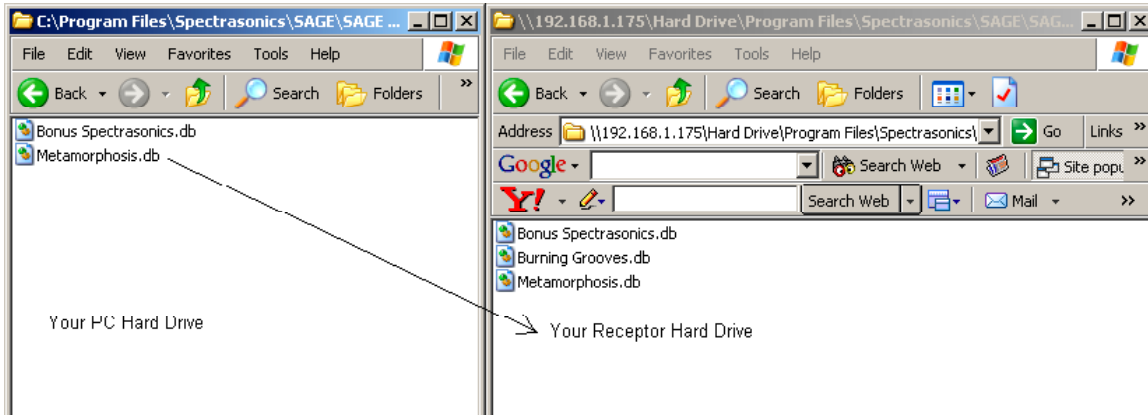
Windows Users: Currently you cannot paste text from a PC to a Receptor window.

Installing Xpanders

1. Install the Xpander Sound Pack onto your personal computer.
2. Copy the SAGE library folder to: <Receptor HD>\Program Files\Spectrasonics\SAGE



NOTE: If this is the second Xpander pack you are installing, just move the *.db to <Receptor HD>\Program Files\Spectrasonics\SAGE\SAGE Libraries\EXP Libraries folder.



3. Copy the respective Xpander Multis folder from your PC to the Receptor Hard Drive:

<Your PC>\Program Files\Spectrasonics\SAGE\Stylus RMX\Patches\Multis

<Receptor HD>\Program Files\Spectrasonics\SAGE\Stylus RMX\Patches\Multis

Using the RMX Drag and Drop feature with Receptor

1. On Receptor, select the Groove that you would like to use in your sequencer and drag it to the “drag and drop” window on the Stylus under MIDI FILE. On your computer, open the support folder inside the Spectrasonics folder located in the Program Files folder on the Receptor Hard Drive and drag the groove “.MID” file over to your computer.

<Receptor HD>\Program Files\Spectrasonics\support\<groovename.MID>

It can now be opened in a new sequence file or project. Some sequencers, such as Cubase, allow you to drag a .MID file directly onto an open track and automatically open the file in that track.

Known Bugs:

- Stylus RMX will not operate at a sample rate of 96kHz on Receptor. Attempting to run Stylus RMX at a 96kHz sample rate on Receptor will freeze Receptor and require a reboot.