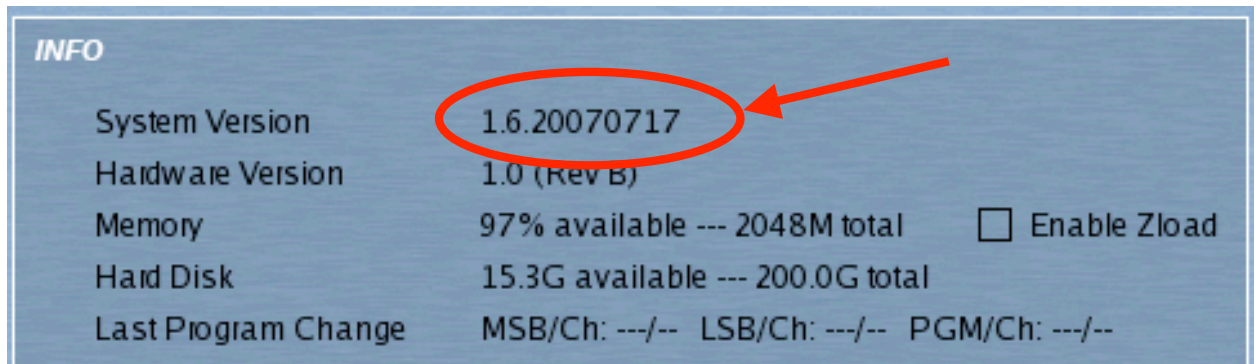


**Step-by-Step Instructions for installing the Native Instruments Service Center onto Receptor so you can authorize your virtual instrument software**

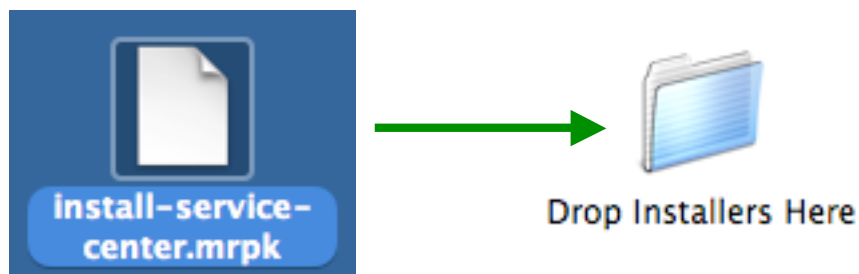
**IMPORTANT: Load a blank Receptor Multi patch before proceeding!**

This update should be performed from the Receptor's graphical user interface (**NOT the Front Panel**).

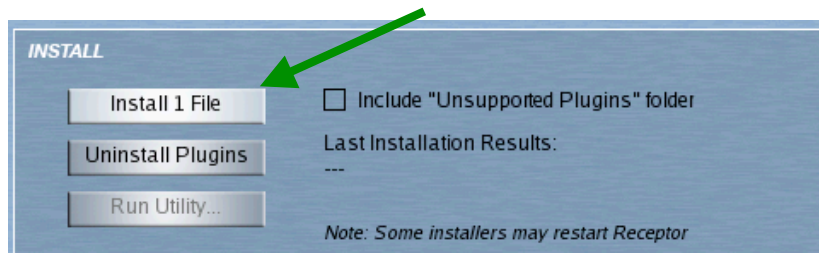
1. Open up the Receptor SETUP window. Verify that your Receptor is running the latest system software: the INFO > System Version must be 1.6.20070717 or later. (If not, go to [www.pluginorama.com](http://www.pluginorama.com) and download and install the latest Receptor System update. See the instructions that come with the system updater on how to install the software update.)



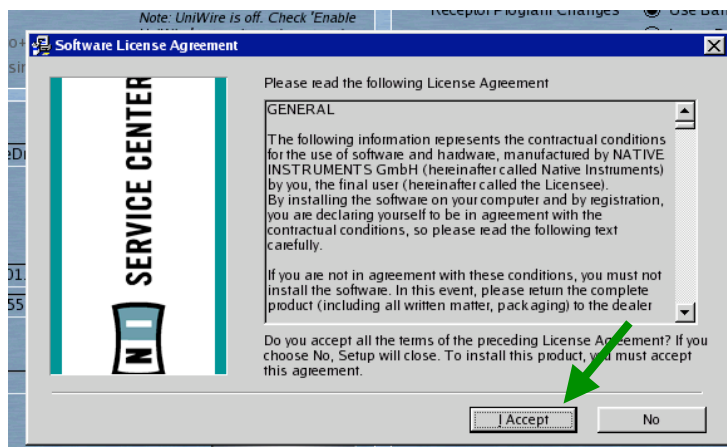
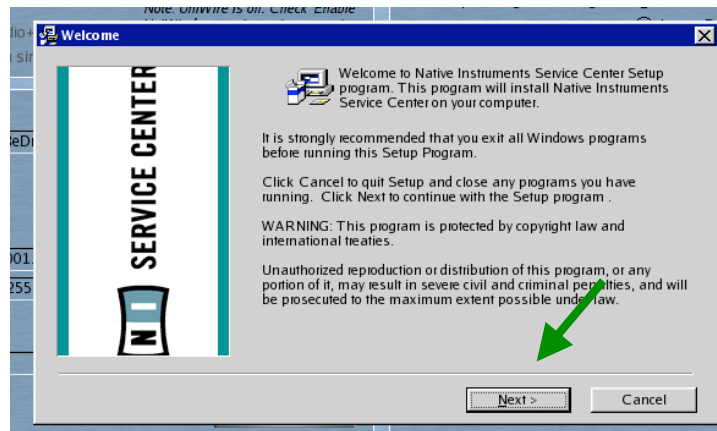
2. Log on to Receptor's hard drive from your computer. Once you have the hard drive mounted on your computer's desktop, drop the **install-service-center.mrpk** file into Receptor's "Drop Installers Here" folder.



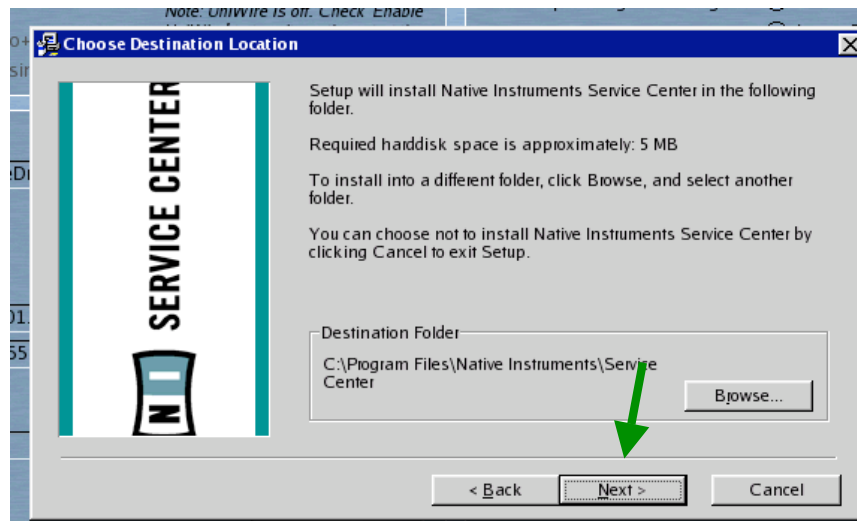
3. After the file is copied into the "Drop Installers Here" folder, click "Install 1 File" on the SETUP page of the Receptor's graphical interface:



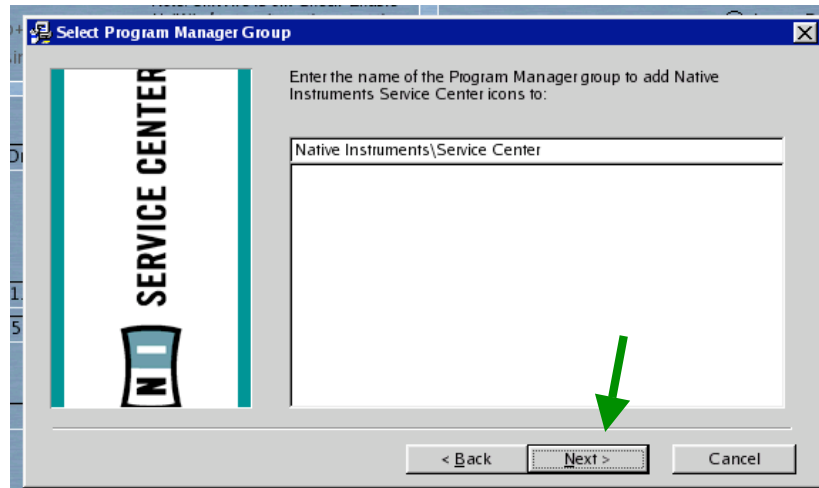
4. After the installation is finished, the NI Service Center installer will open. Click on "Next" and "I Accept".



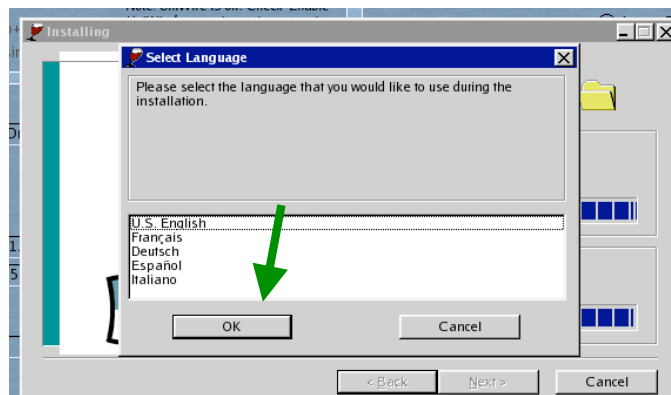
- When "Choose Destination Location" appears click "Next". **DO NOT CHANGE THE PATH OR THE SERVICE CENTER WILL NOT WORK!**



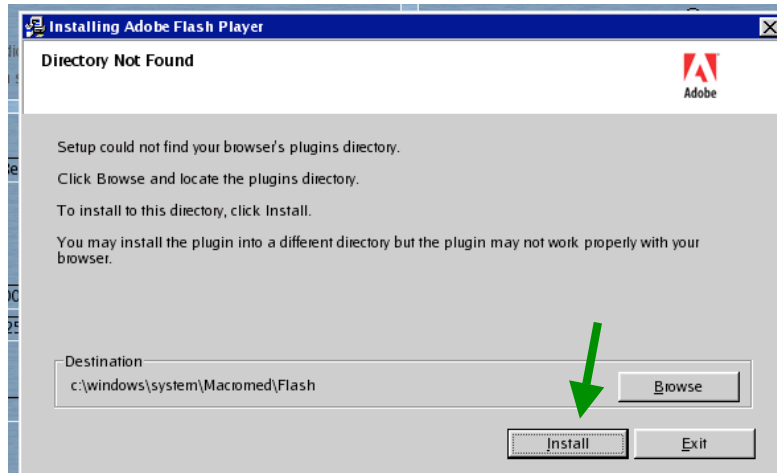
- Ignore the Program Manager group selector, just click "Next" again.



- Select "U.S. English" and click "OK".



8. Now you'll see the Adobe Flash installer. Click INSTALL to install. *NOTE: Ignore the "Directory Not Found" message and select "Install".*



9. After the installation is completed, click "Finish". **Do not select any of the check boxes.** The NI Service Center is now installed and is ready to run on Receptor. You can now authorize Native Instruments software using the Service Center program.

